



BPZ2005 digital pressure gauge use HT series piezoresistive silicon pressure sensor as signal measure element. It utilizes ASIC design and stainless steel isolate diaphragm. It has high accuracy, good stability, long life.

They use the large LCD digital display, 18mm(0.71 ") high ,eliminates the guesswork that occurs when taking readings with an analog dial gauge. Zeroing the display is done with the push of a button. The auto-off function will display the pressure readings for 1-15 minutes (optional) before the unit automatically shuts off, prolonging battery life.

Special Features

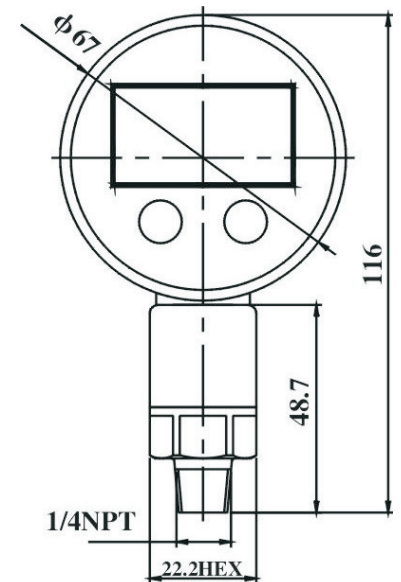
- Accuracy: 0.5%FS or better
- Operating Temperature Range: 0 to 50°C
- Battery: 9V alkaline(included)
- Case Dimensions: 67mm Dia.
- Case Material: ABS
- Unit Selectable: KPa, MPa, Bar, kg/cm², Psi
- Wetted Parts: 316L stainless steel

Application

- Liquid, gases which compatible with 316LSS
Used to petroleum, chemical industry, power plant, water supply of town, Hydro logic exploration fields.

Specification

Range	: -0.1~0 . . . ~100MPa
Proof pressure	: 1.5X rated pressure or 110Mpa, whichever is less
Accuracy	: $\pm 0.25\%$ (Typical) 0.5% (Max.)
Long stability	: $\pm 0.2\%$ F.S/year
Operating Temperature	: 0°C~50°C
Supply	: 9V
Battery life	: 2 years in power-saving mode
Housing dimension	: 67 116mm
Housing material	: ABS, stainless steel 1Cr18Ni9Ti
Diaphragm material	: 316L
Pressure port	: 1/4~18NPT



(BPZ2005)

Ordering Example : BPZ-2005-CONNECTION-RANGE